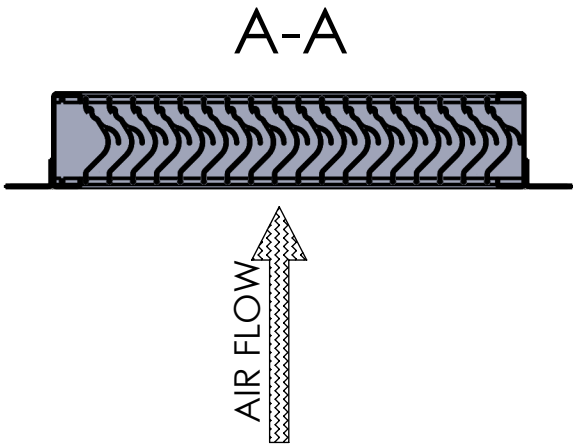
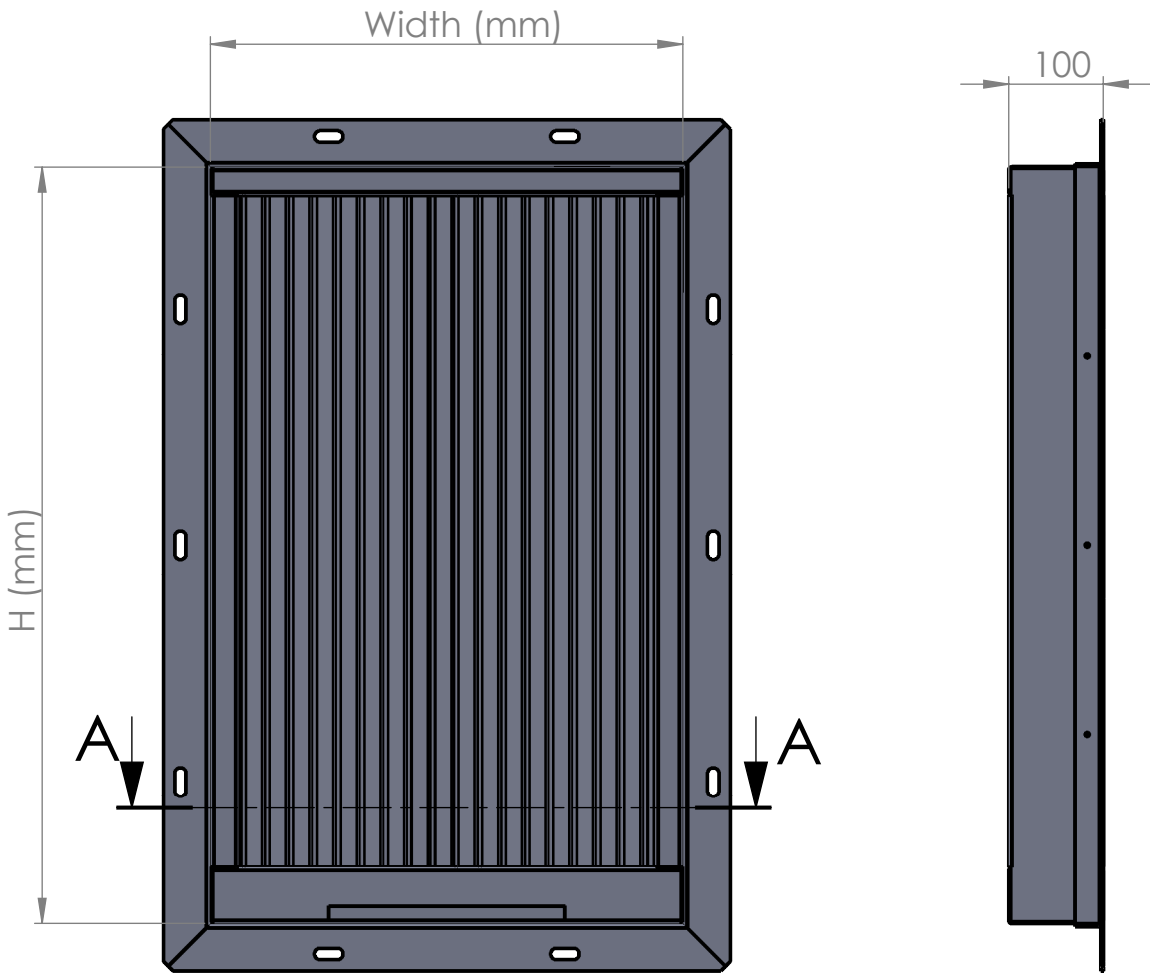


Name	Material	HC	Width	Height	Dept	Drain Type	Flange type	Flange Width	Flange position
CamVane 100	AL = Alu. EN AW 5754 AS = Stainless AISI 316L	HC-20/50=20W 50mm spacing HC-20/25=20W 25mm spacing HC-60/50=60W 50mm spacing HC-60/25=60W 25mm spacing	W (mm) Min: 300mm Max: 2500mm	H (mm) Min: 300mm Max: 2500mm	100	DS - Drain Slot DF - Drain Tube on front DB - Drain Tube Backward DU - Drain Tube Under	FLR - Left and Right FUL - Upper and Lower FAR - Around FNO - No Mounting Flange	50mm 30mm	I = Inlet O = Outlet D = Inlet and Outlet

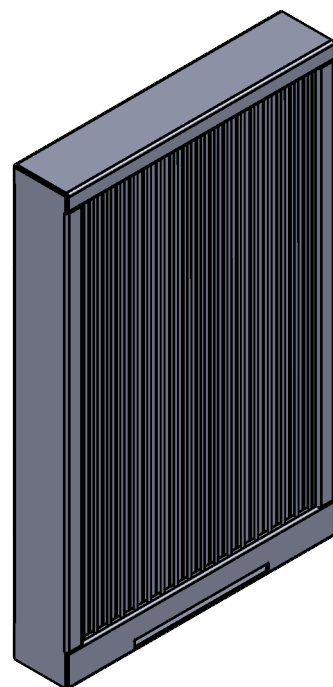
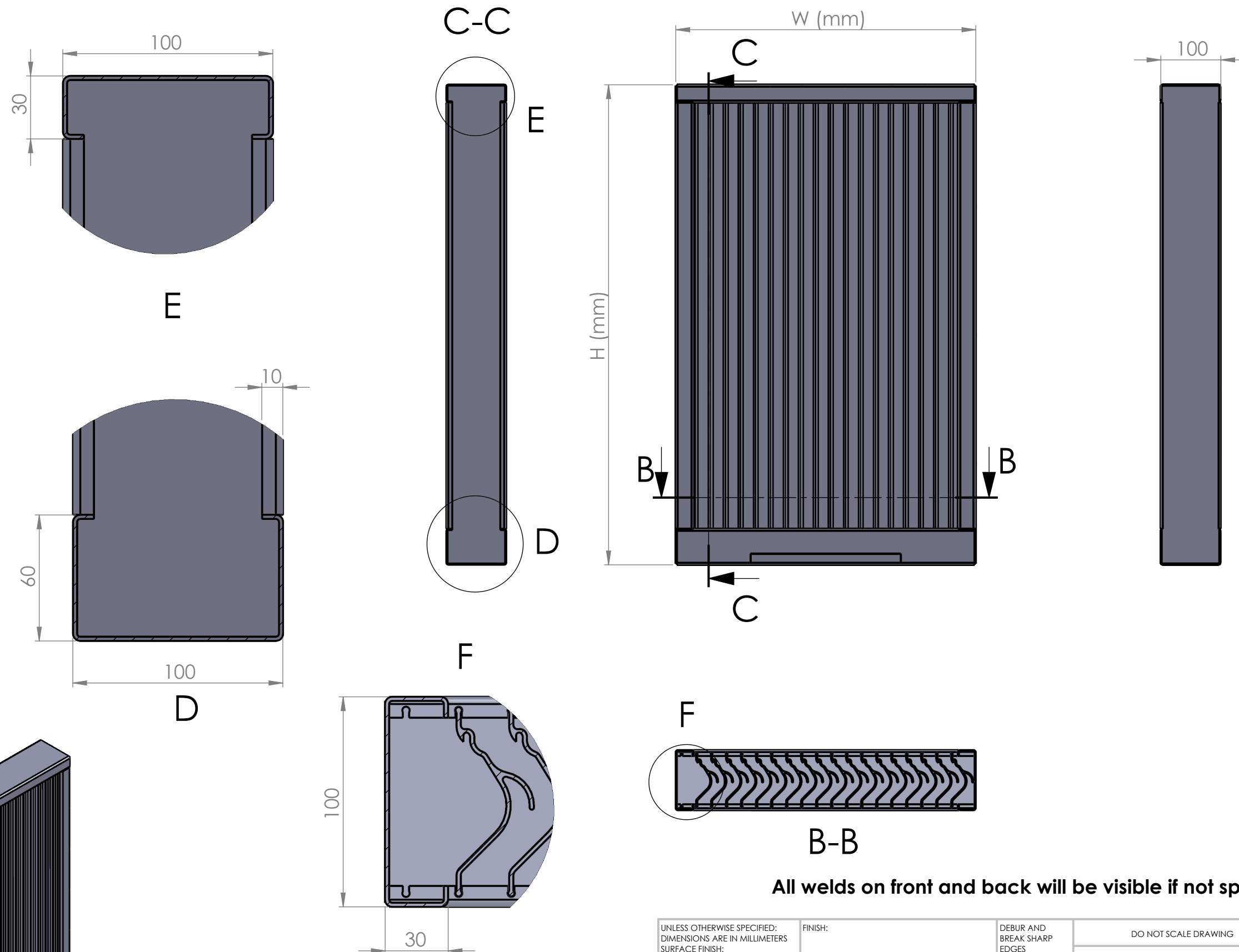


Product Code

Ex. CamVane 100 HC-20/50 AL :: 500x800x100-DH- FAR/50-I RAL


- HC (power/pitch)
- Material
- Width
- Height
- Dept
- Drain Type
- Flange Type
- Flange Width
- Flange Position
- Color code

UNLESS OTHERWISE SPECIFIED: DIMENSIONS ARE IN MILLIMETERS SURFACE FINISH: TOLERANCES: +/- 3mm LINEAR: ANGULAR:				FINISH:		DEBUR AND BREAK SHARP EDGES		DO NOT SCALE DRAWING		REVISION	
	NAME		SIGNATURE		DATE		TITLE:				
DRAWN	Jonny T				2011-07-12 10:41:22		CamVane100 Product Sheet				
CHK'D											
APP'VD											
MFG											
Q.A							MATERIAL:		DWG NO.		A3
									Product Code		
							WEIGHT:		SCALE:1:10		SHEET 1 OF 6



Frame in aluminium is made of 2,0mm sheetmetal
 Frame in stainless is made of 1,5mm sheetmetal
 CamVane profiles is made of aluminium EN AW 6060

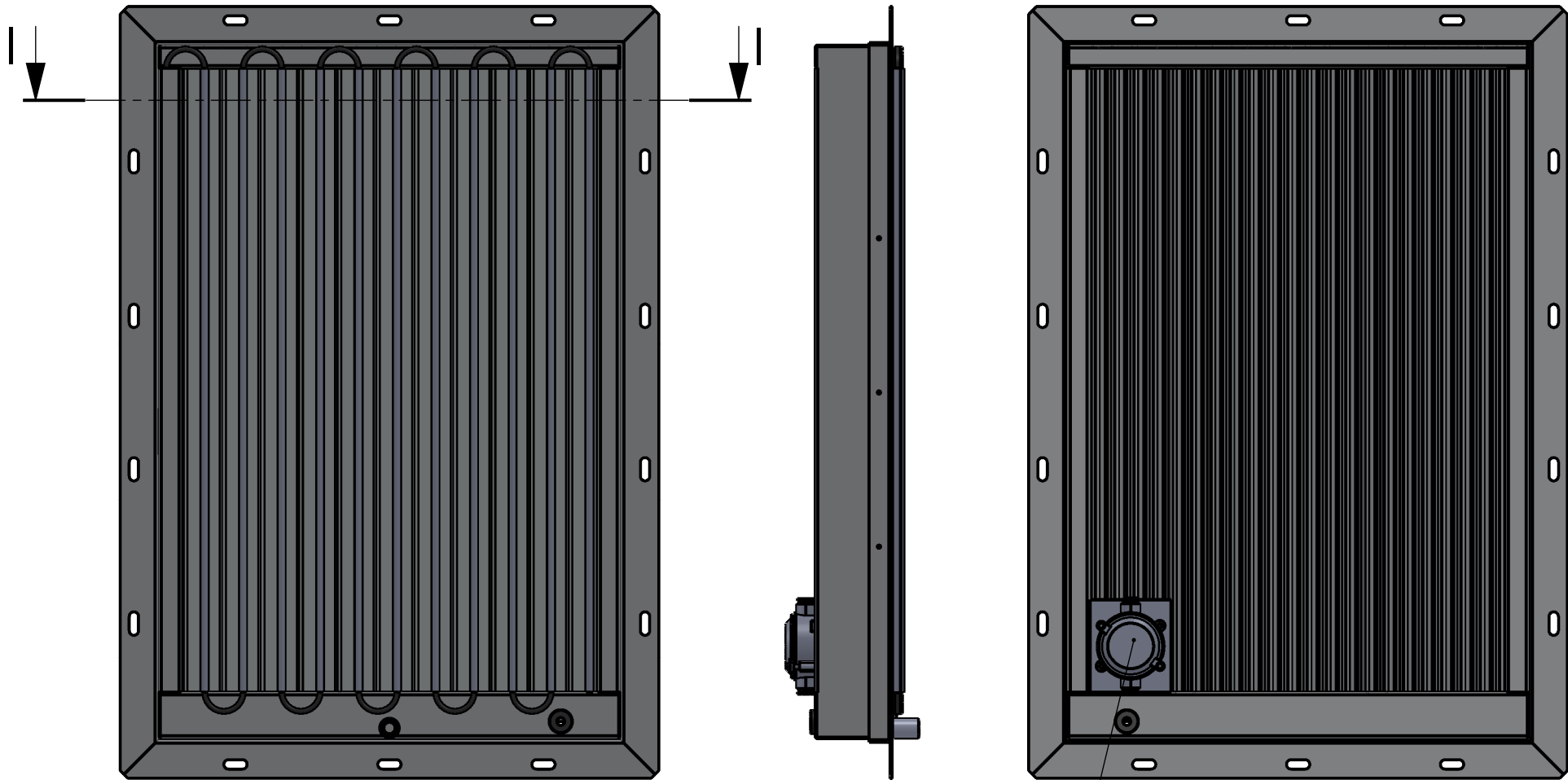
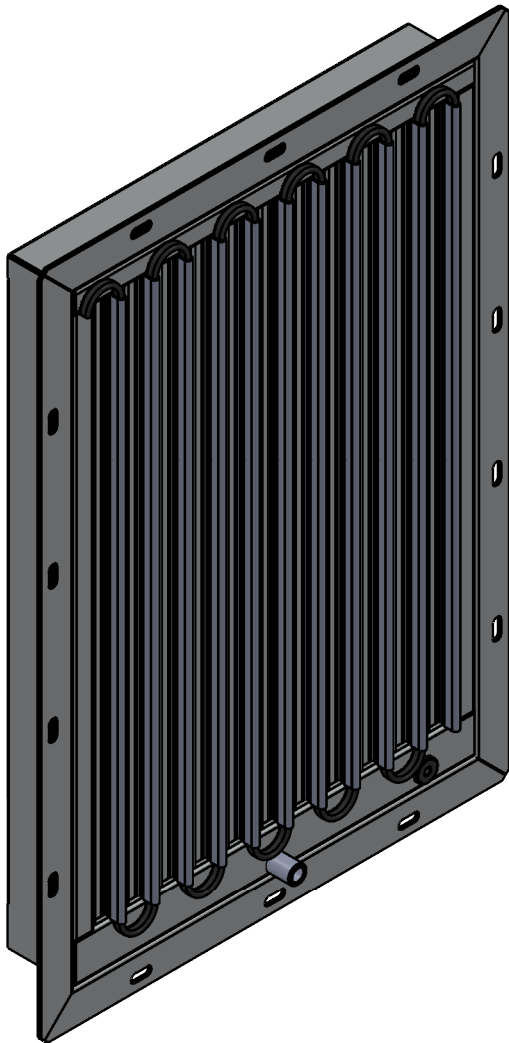
All welds on front and back will be visible if not specified otherwise

UNLESS OTHERWISE SPECIFIED: DIMENSIONS ARE IN MILLIMETERS SURFACE FINISH: TOLERANCES: +/- 3mm LINEAR: ANGULAR:				FINISH:	DEBUR AND BREAK SHARP EDGES	DO NOT SCALE DRAWING	REVISION
DRAWN Jonny T				SIGNATURE	DATE	 CamVane 100 Product Sheet	
CHK'D					2011-07-12 10:41:22		
APPV'D							
MFG							
Q.A							
				MATERIAL:		DWG NO.	A3
						SCALE:1:10	SHEET 2 OF 6

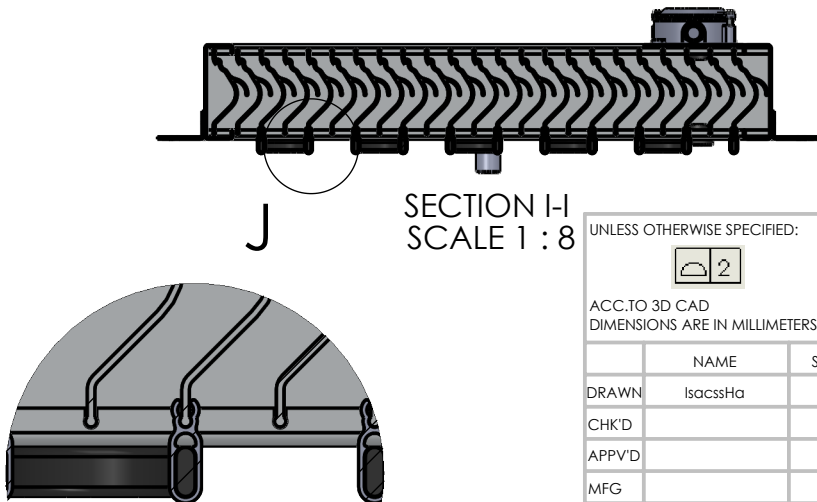
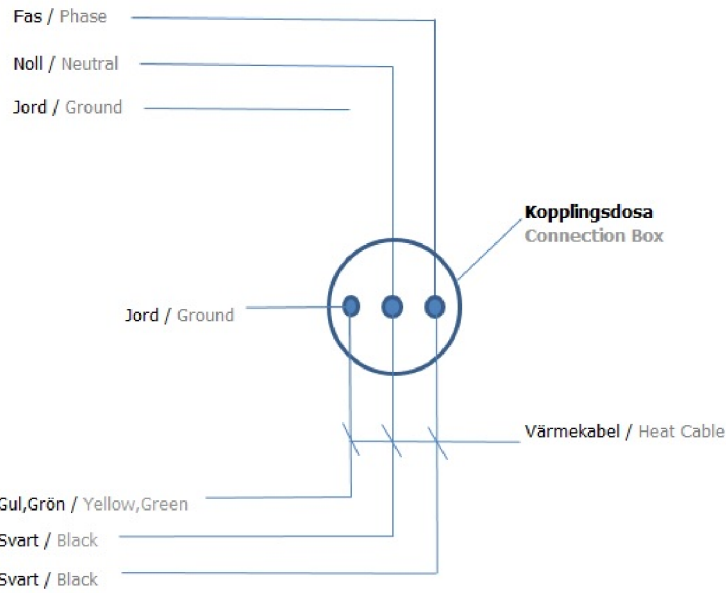
Inside the connecting box there is a 3 points screws connector to connect the 230VAC. Connect to a driving relay switching on and off with a temperature sensor or an manual on/off switch (is not provided). Connectionbox is IP67 class.

Heat Cable : 230VAC and autoregulated.

Note
If size is over a specefied length, one heat cable is not sufficient. Then it's equipped with two separate cables and two connection boxes.




Connection Box IP67

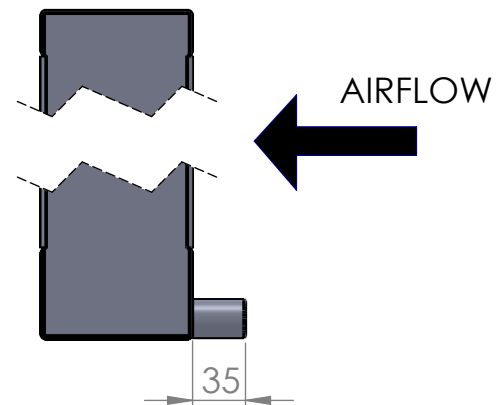
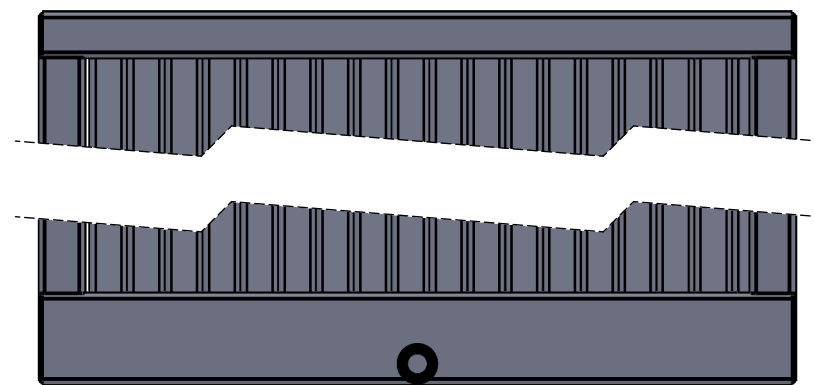


SECTION I-I
SCALE 1 : 8

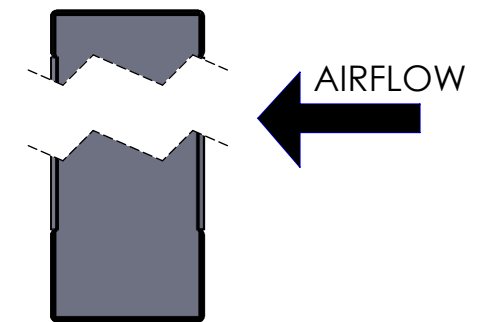
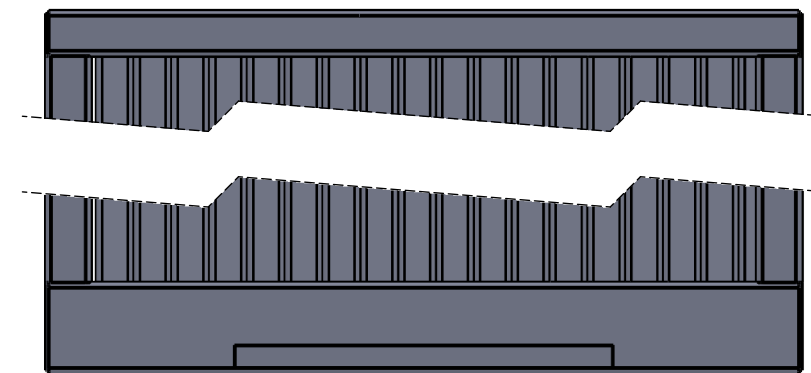
DETAIL J
SCALE 1 : 2

UNLESS OTHERWISE SPECIFIED:				FINISH:		DEBUR AND BREAK SHARP EDGES		DO NOT SCALE DRAWING		REVISION	
<div>ACC.TO 3D CAD DIMENSIONS ARE IN MILLIMETERS</div>								<div>camfil CLEAN AIR SOLUTIONS</div>			
	NAME	SIGNATURE	DATE			TITLE: CamVane 100 Product Sheet					
DRAWN	IsacssHa		2023-10-24								
CHK'D											
APPV'D											
MFG											
Q.A				MATERIAL:		DWG NO. Heat Cable				A3	
				WEIGHT:		SCALE:1:10				SHEET 3 OF 6	

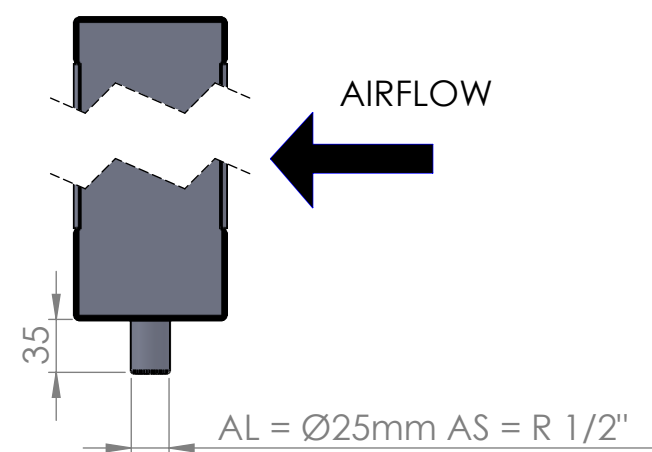
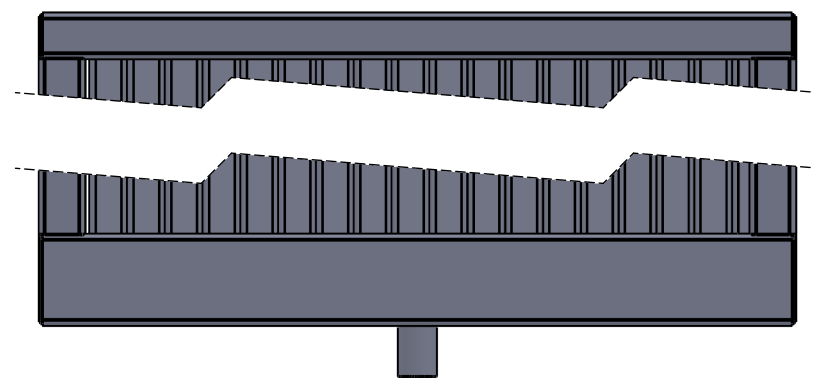
Drain Type DF



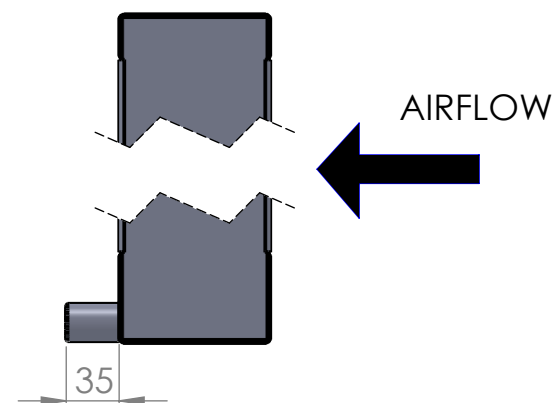
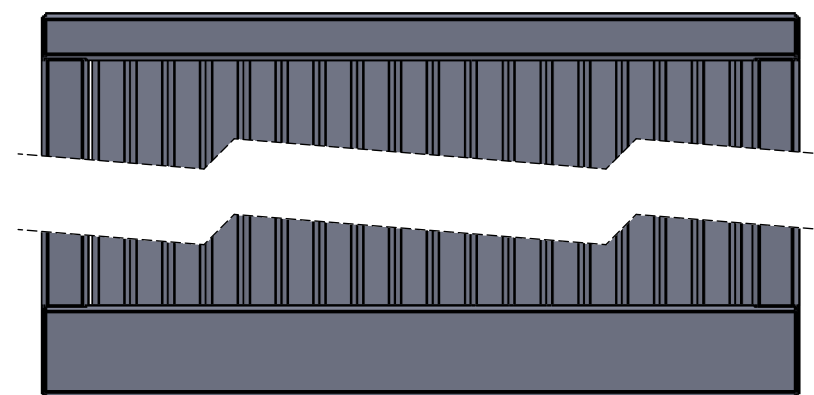
Drain Type DS




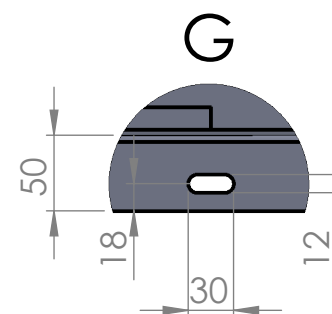
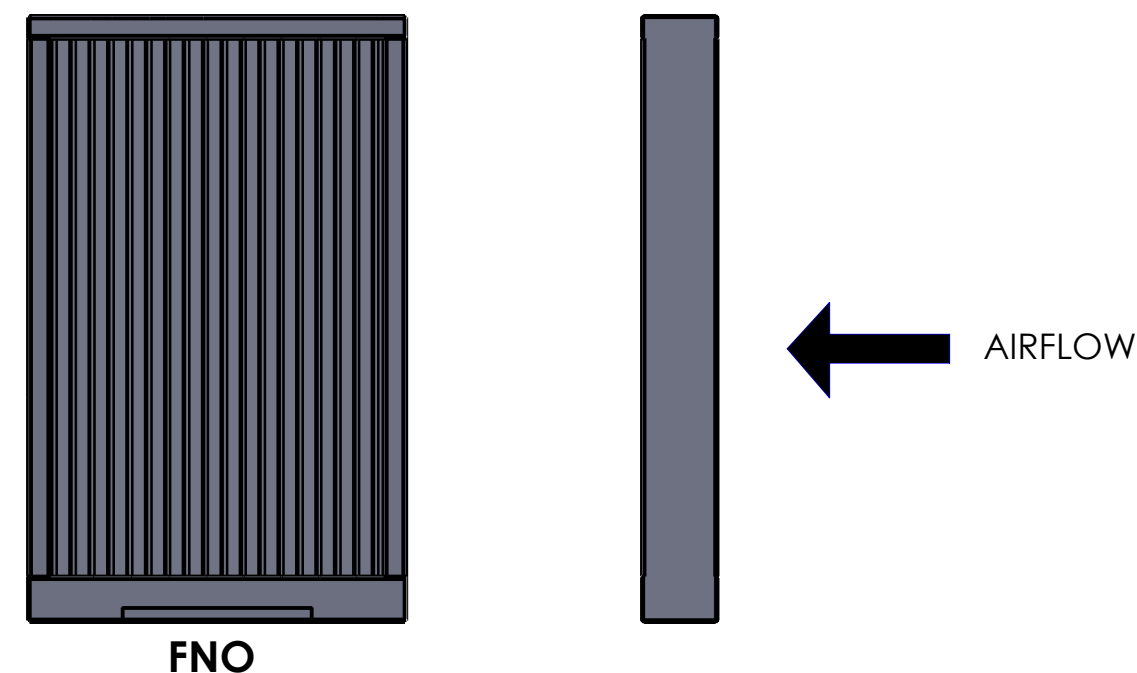
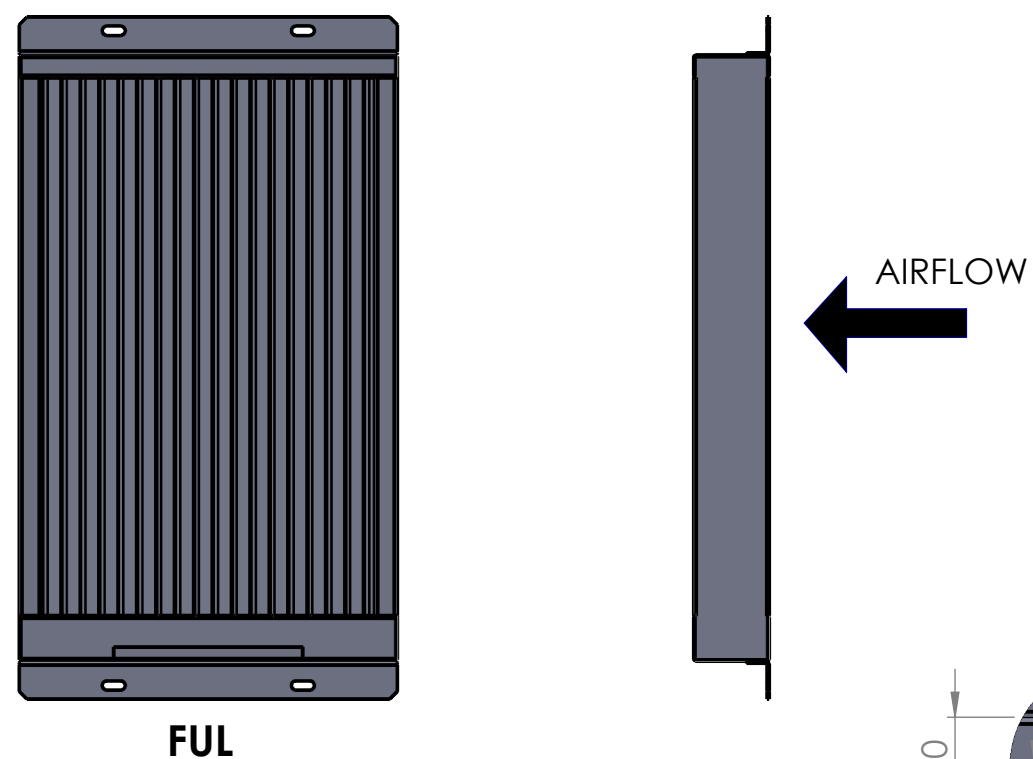
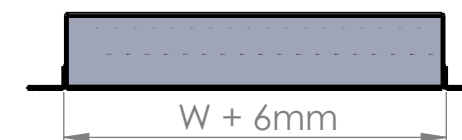
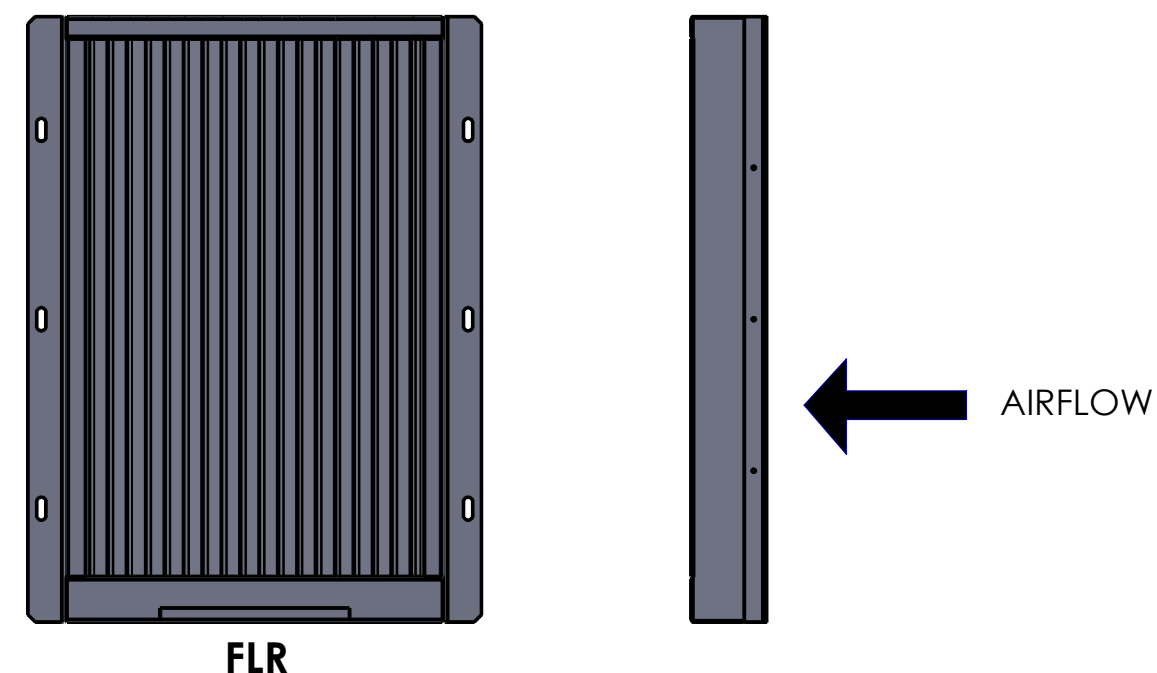
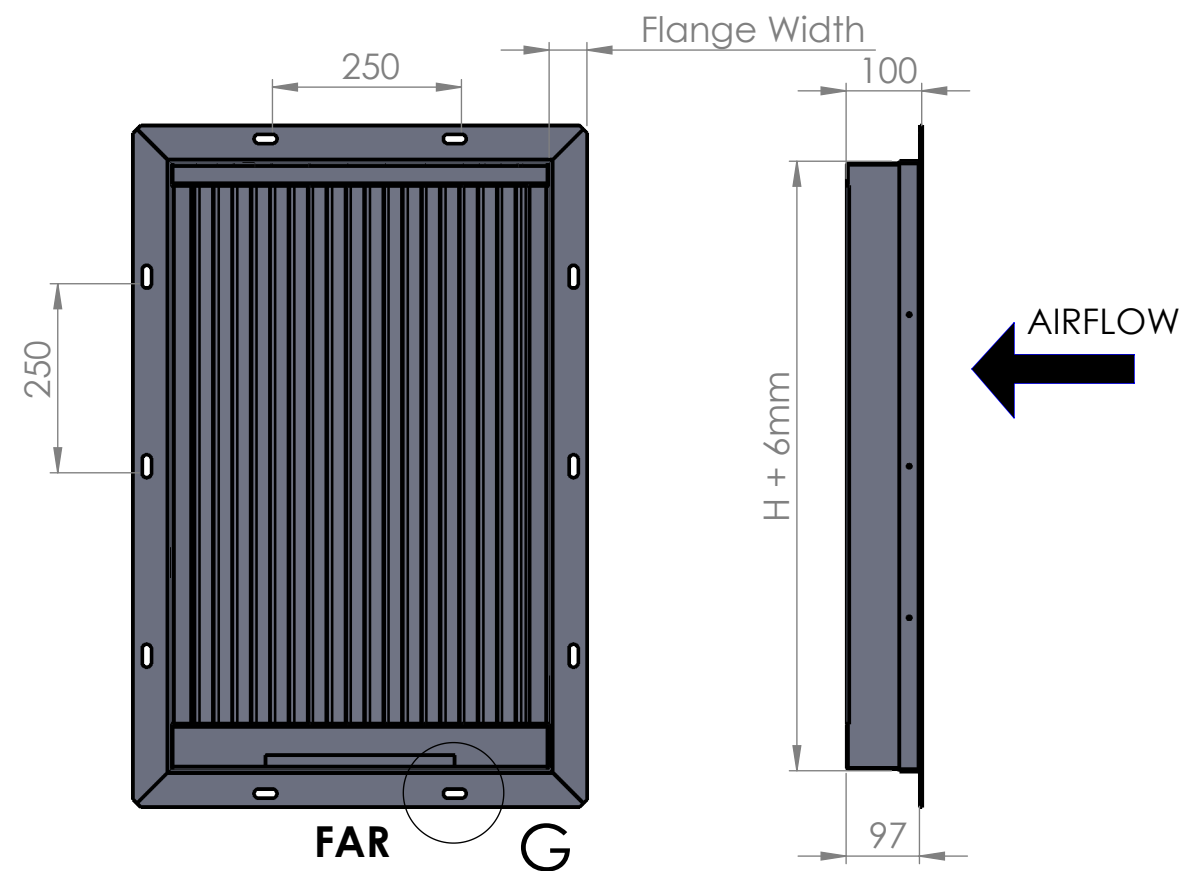
Drain Type DU




Drain Type DB



UNLESS OTHERWISE SPECIFIED: DIMENSIONS ARE IN MILLIMETERS SURFACE FINISH: TOLERANCES: +/- 3mm LINEAR: ANGULAR:				FINISH:	DEBUR AND BREAK SHARP EDGES	DO NOT SCALE DRAWING	REVISION
DRAWN Jonny T				SIGNATURE	DATE	 CamVane 100 Product Sheet	
CHK'D							
APPV'D							
MFG							
Q.A							
				MATERIAL:		DWG NO.	A3
						SCALE:1:10	SHEET 4 OF 6



Mounting Flange in aluminium is made of 3,0mm sheetmetal
Mounting Flange in stainless is made of 2,0mm sheetmetal

UNLESS OTHERWISE SPECIFIED: DIMENSIONS ARE IN MILLIMETERS SURFACE FINISH: TOLERANCES: +/- 3mm LINEAR: ANGULAR:			FINISH:	DEBUR AND BREAK SHARP EDGES	DO NOT SCALE DRAWING	REVISION
DRAWN Jonny T			SIGNATURE	DATE 2011-07-12 10:41:22	 CamVane 100 Product Sheet	
CHK'D						
APPV'D						
MFG						
Q.A						
			MATERIAL:		DWG NO.	A3
			WEIGHT:		SCALE:1:10	SHEET 5 OF 6

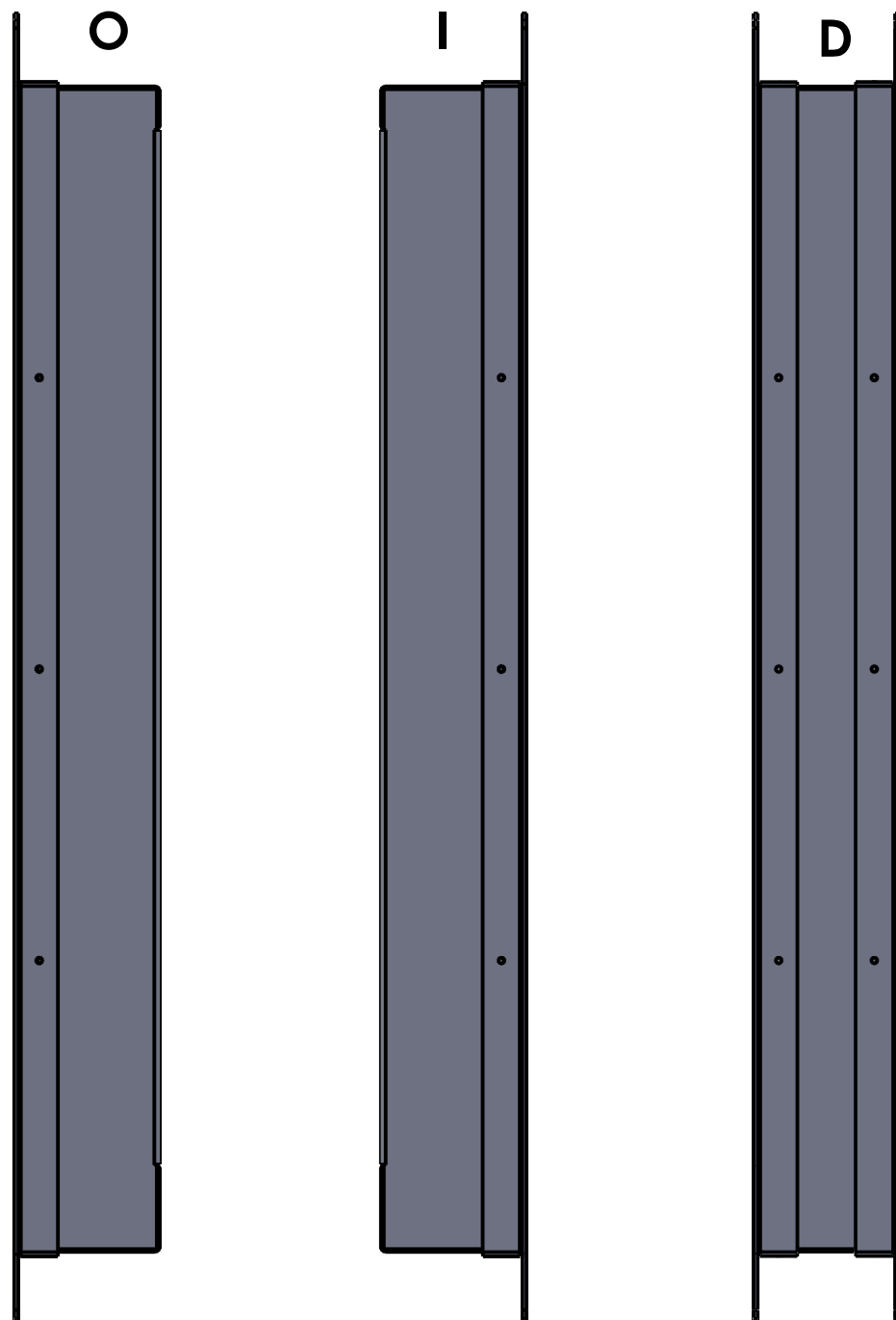
Weight /m²

AL - Alu. EN AW 5754	AS - Stainless AISI 316L
Approx. 38kg/m ²	Approx. 64kg/m ²

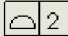

Dimensions of opening for CamVane

Size of CamVane	Size of hole for CamVane
300x300 -> 1000x1000	+8mm with no flange +14mm with flange
1000x1000 -> 1800x1800	+15mm with no flange +21mm with flange
1800x1800 -> 2500x2500	+20mm with no flange +26mm with flange

Flange position



A large black arrow points to the left, with the word "AIRFLOW" written in black capital letters to its right.

UNLESS OTHERWISE SPECIFIED:		FINISH:		DEBUR AND BREAK SHARP EDGES		DO NOT SCALE DRAWING		REVISION	
									
ACC.TO 3D CAD DIMENSIONS ARE IN MILLIMETERS						<div> <div>TITLE:</div> <div>CamVane 100 Product Sheet</div> </div>			
DRAWN	IsacssHa	SIGNATURE	DATE						
CHK'D			2023-10-24						
APPV'D									
MFG									
Q.A				MATERIAL:		DWG NO.		A3	
						Miscellaneous			
				WEIGHT:		SCALE:1:10		SHEET 6 OF 6	